

Wisconsin Integrated Transition Planning
Project (WITPP):
WI Transition Planning Coalition
November 10th or 30th, 2021



Our Agenda



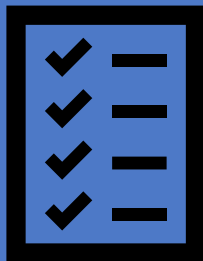
- I. Welcome, Agenda Review
- II. WITP Implementation Project Overview
- III. Bright Spot: Supported Decision Making
- IV. Breakout Discussion/Group Report Out
- V. Wrap Up and Poll

Meeting Objectives



- Describe the WITPP implementation grant's new structure and plans for the next three years
- Listen to one self-advocate's experience with Supported Decision Making and how Supported Decision Making works with healthcare providers
- Discuss strategies for ensuring information about Supported Decision Making is getting to people with disabilities and their families

Planning Grant Recap



Annotated Resource List for Integrated Transition Planning*

Compiled from the WITPP Project

Broad resources that lead to other resources or information/referrals

Policy/Organizational Guidance:

Interagency Agreement on Transition (June 2020)

<https://dwd.wisconsin.gov/dvr/partners/agreements/pdf/dpi-interagency-agreement.pdf>

The Department of Public Instruction (DPI), Department of Workforce Development (DWD) Division of Vocational Rehabilitation (DVR), and Department of Health Services (DHS) have the primary responsibility for providing services to students and youth with disabilities. This agreement outlines a plan to coordinate activities and programs within each agency to support positive transition with an adult goal of competitive integrated employment. This agreement is intended to support successful transition from childhood to adulthood for Wisconsin residents with disabilities.

The accompanying [Transition Action Guide \(TAG\) For Post-School Planning \(wisconsin.gov\)](#) (March 2015) is being updated to include more information on integrating health care in the transition planning, and will have online training available for its use in 2022.

Resources for Professionals, Families and Youth:

PACER [Learning Center - National Parent Center on Transition and Employment \(pacer.org\)](#)

The Learning Center informs parents and others about major components of transition to adulthood for youth with disabilities. Explore relevant articles and current resources that will help youth meet their goals for life after high school. Modular content addresses topics related to education, employment and health.

Regional Centers for CYSHCN

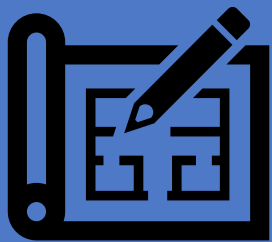
<https://www.dhs.wisconsin.gov/cyshcn/regionalcenters.htm>

WI has 5 regional centers staffed by information and referral specialists, who are available to assist with questions about transition planning, including health benefits, changing doctors and systems from pediatrics to adult health care, independent living and employment services, and communication with schools about transition planning. [Finding Your Way: A Navigation Guide for Wisconsin Families Who Have Children and Youth with Special Health Care Needs and Disabilities](#)

Finding Your Way (English) <https://ucedd.waisman.wisc.edu/fyw/>

Encuentre Su Camino (Spanish) <https://ucedd.waisman.wisc.edu/encuentre-su-camino/>

Implementation Grant Overview



Administration for Community Living (ACL) Community-Based Transitions Implementation

Grant: *Sept 2021 – Aug 2024*

- The University of Georgia
- Georgetown University
- The University of Kansas Center for Research
- The University of Iowa
- The University of Wisconsin – Waisman Center

<https://acl.gov/news-and-events/announcements/new-uccdd-grants-address-community-transitions-mental-health>

UCEDD Constituent Advisory Committee
 Abigail Tessmann, Co-Chair
 Nancy Alar, member
 Mitch Hagopian, member
 Maria Nogueron, member
 Julie Schears, coordinator

University Center for Excellence in Developmental Disabilities (UCEDD)
 Lynn Hrabik, PI/Project Director
 Anne B. Harris, Co-PI/Co-Project Director
 Learnn DaWalt, Co-PI/Co-Project Director
 Nicole Bays, Project Coordinator
 Katherine Mowery
 Project Consultant (inContract contracted)

Stakeholder Leadership Team
 Elizabeth Guthrie-Moss, YHTI
 Pam Jenson, TIG
 Sarah Koehn, DWD-DVR
 Jennifer Neugart, BPDD
 tbd, Advocate
 tbd, Barron County
 tbd, Rhineland Area
 tbd, Rock County

Wisconsin Transition Planning Coalition

State Partners
 Board for People with Disabilities (BPDD)
 Disability Rights Wisconsin (DRW)
 WI Division of Vocational Rehabilitation (DVR)
 WI Department of Public Instruction (DPI)
 WI Department of Health Services (DHS)
 Children and Youth with Special Health Care Needs (CYSHCN) Regional Centers
 Youth Health Transition Initiative

Education, Health Care and Wellness organizations
 UW Whitewater - CITEE
 Special Olympics
 YMCA Metropolitan Milwaukee
 Madison Metropolitan School District
 Milwaukee Public Schools
 Sauk Prairie School District
 WI Transition Improvement Grant
 Nicolet Technical College Jump!
 Start Program
 Judy Stych, DNP, RN
 Rhineland School District
 Edgewood College-Cutting Edge

Youth and Adults with ID/DD, Family Members, Self-advocacy Organizations
 Ashley Mathy, Advocate
 Nicole Vander Meulen, Advocate
 Sharice Baquet, Parent
 Family Voices of Wisconsin
 Youth Health Transition Family and Youth Advisors
 Autism Society of SC Wisconsin
 PATCH
 People First
 Aiming for Acceptance

Community-based Service Agencies and Employment
 TransCen (UW Milwaukee)
 Employment Resources, Inc.
 Padres e Hijos en Accion
 Mixon Construction
 Project SEARCH
 Headwaters, Inc.
 NAMI, WI
 LOV Inc.
 Inclusa
 Barron County DSI

Aims / Primary Outcome:

Families and youth receive relevant information and support for integrated transition planning (ITP) by the time the youth with ID/DD turns 18.

Beliefs:

- ITP includes post-secondary education, employment and healthcare to support integrated community living.
- Start discussions and planning early (ages 12-14 years).
- Have high expectations for independent and integrated community living.
- Give equal voice to those with hardest time accessing support.

Measure:

families and youth report receiving relevant information and support for ITP by age 18.

Primary Drivers:

Components which will contribute to moving the aim

Systems work together to provide integrated transition planning at a local level for youth with IDD

Transition Information is readily available and accessible through multiple resources and for diverse stakeholders

Youth and families have support to navigate the system

Health care is accessible and included in transition planning

Secondary Drivers:

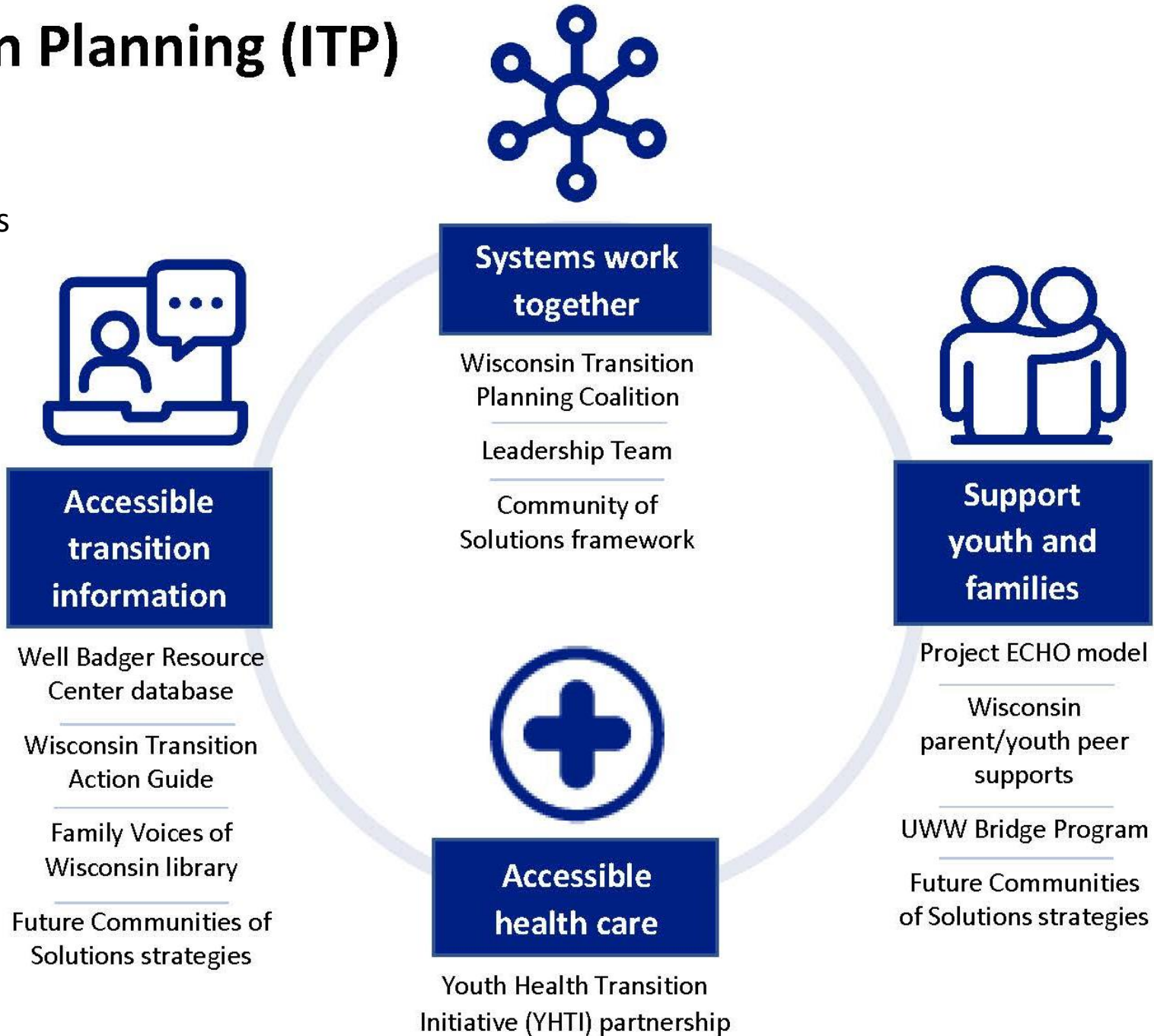
Elements that can be used to test changes to affect the primary driver

- Families and youth with lived experience are engaged as equal partners
- Transition policies and timelines are aligned
- All sources of information use similar messaging
- Systems include integrated information
- Information is culturally relevant
- Information is available in multiple formats
- Youth and parent peer support systems exist for transition
- Families trust systems where they receive services and support
- Professionals and families receive relevant training
- Team planning happens early and often
- Use person-centered practices
- Education transition planning includes considerations for healthcare
- Health insurance is part of financial planning
- Adult providers are prepared to serve patients with disabilities

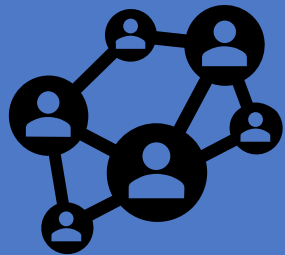
A driver diagram is used to conceptualise an issue and determine its system components which will then create a pathway to get to the aim.

Integrated Transition Planning (ITP)

- ↑ Diverse partners
- ↑ Self-advocate and family leaders
- ↑ Effective practices in place
- ↑ Families/youth receive information



Implementation Grant Overview



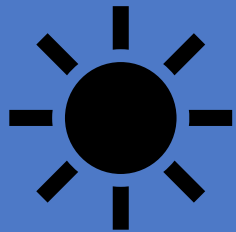
Efforts so far:

- Staffing and contracting in place
- Checking in with partners
- Creating grant materials (recruitment, website)
- Planning this coalition meeting

Up next:

- ACL grantee meeting
- Leadership Team meeting
- Bringing Communities of Solutions communities back together
- January coalition meeting

Bright Spot: Supported Decision Making



Jordan Anderson, Self-Advocate

Check out and share Jordan's Self-Determination Channel YouTube Video:

<https://www.youtube.com/watch?v=qPC1VoFRCx0>

Tami Jackson, WI BPDD

Upcoming Supported Decision Making and Alternatives to Guardianship event on February 17, 2022, 1-4pm via Zoom

https://wi-bpdd.org/wp-content/uploads/2021/11/SDM-training-flyer_02172022_Comp.pdf

Breakout Questions



1. What are you doing to share information about Supported Decision Making with families, schools, healthcare providers, agencies, etc.?
2. What can we do more of or differently to ensure all youth and families get information about Supported Decision Making early enough?

Next Steps

- Communities will meet in December and begin to resume their work
- Leadership Team meeting in January
- Next Coalition meeting: January 12th at 2:30 to 4pm or January 27th at 10am to 11:30am

Thank you!

Shannon Webb

shannon@incontrolwisconsin.org

608.712.2212

Katherine Mowery

kmowery@wisc.edu

608-263-7148