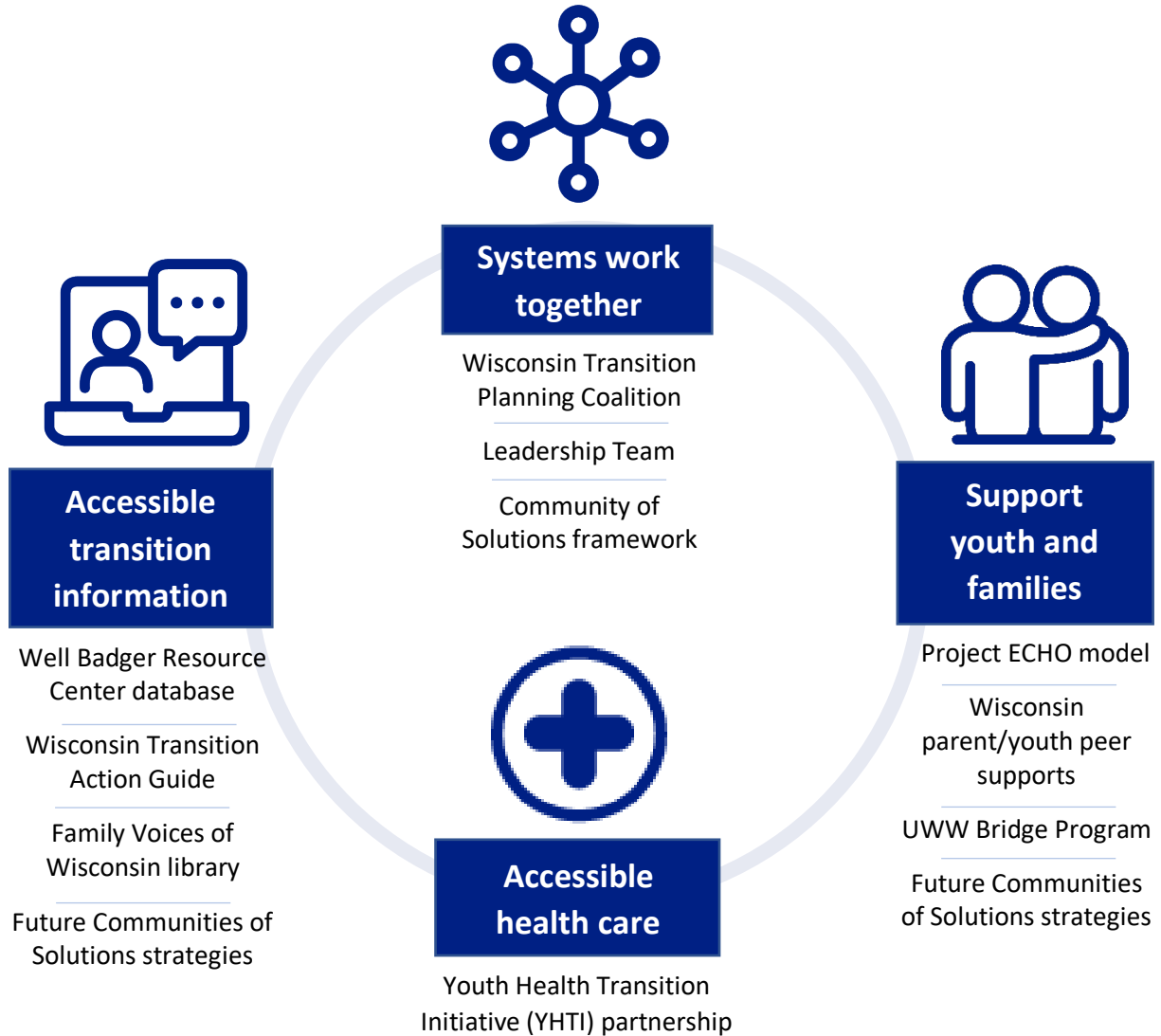


Integrated Transition Planning (ITP)

Beliefs Include post-secondary education, employment and healthcare.
Start discussions and planning early.
Have high expectations for independent and integrated community living.
Give equal voice to those with hardest time accessing support.



Project Aim

More families and transition-age youth with ID/DD in medically underserved Wisconsin communities receive relevant information and support for ITP by age 18.



Meaningful life | Self-direction | Community living